

Tripomastigotes de *Trypanosoma cruzi*

Trypomastigotes of *Trypanosoma cruzi*

Heber Silva-Díaz^{1,a}, Sebastian A. Iglesias-Osores^{2,b}

Trypanosoma cruzi is a pathogenic endemic protozoan of South America, the etiological agent of Chagas disease or American trypanosomiasis. The parasite are transmitted from Triatomas to mammalian hosts (including humans), through a bite when sucking blood. *T. cruzi* intracellular infection can cause death. Although Chagas disease presents an acute febrile phase, it is in the chronic phase that disease is usually detected and typical clinical features (mega-organs and chagasic cardiopathy) are shown^(1,2).

Trypomastigote has a subterminal or terminal kinetoplast and posterior nucleus, a centrally located nucleus, an undulating membrane and a flagellum running along the undulating membrane from posterior

to anterior of the cell⁽³⁾. *T. cruzi* measure from 12-30 μm in length and presents four morphological forms: amastigote (3-5 μm), promastigote, epimastigote (<30 μm) and trypomastigote⁽⁴⁾. Chagas is a neglected tropical disease, whereas in Peru have been found the seropositive in 85% of population of a Nasca⁽⁵⁾. Furthermore, in Latin America there are an estimated of 16 to 18 million of infected people and 21 000 deaths per year⁽⁶⁾.

The microphotographs were taken at Laboratorio de Parasitología, Metaxénicas y Zoonosis del Hospital Regional Lambayeque, from a clinical case attended in the same hospital.

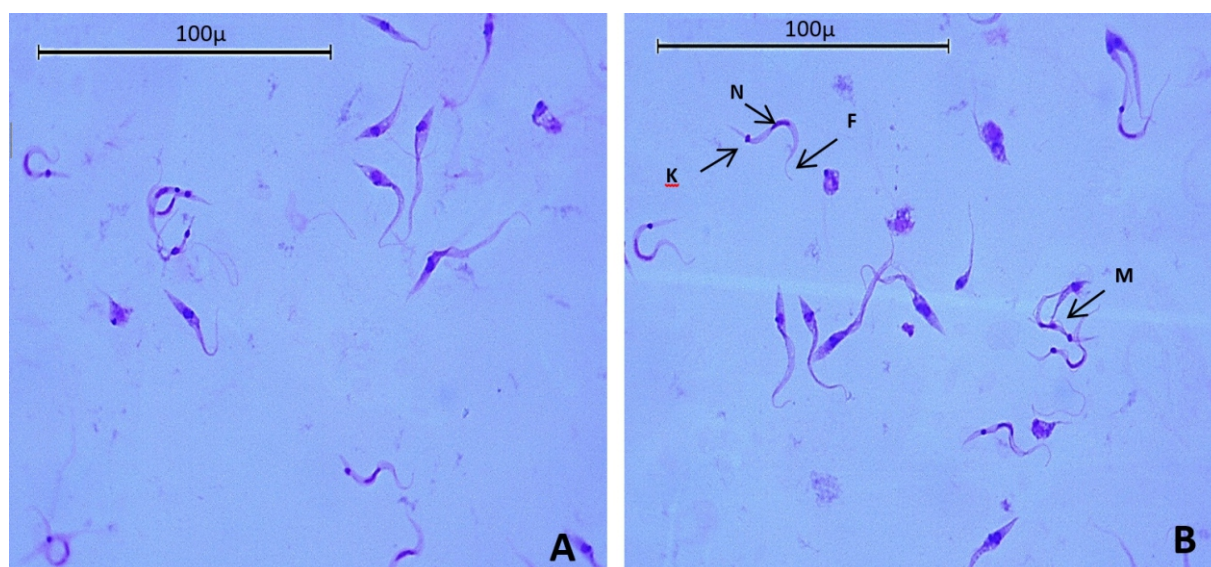


Figure A, B. Trypomastigote of *Trypanosoma cruzi*-in culture, N (nucleus), K (kinetoplast), F (Flagellum) and Mu (undulating membrane)

1. Laboratorio de Parasitología, Metaxénicas y Zoonosis, Hospital Regional Lambayeque, Lambayeque, Perú.
 2. Universidad Nacional Pedro Ruiz Gallo, Lambayeque, Perú.
 a. Biólogo, doctor en Ciencias.
 b. Biólogo

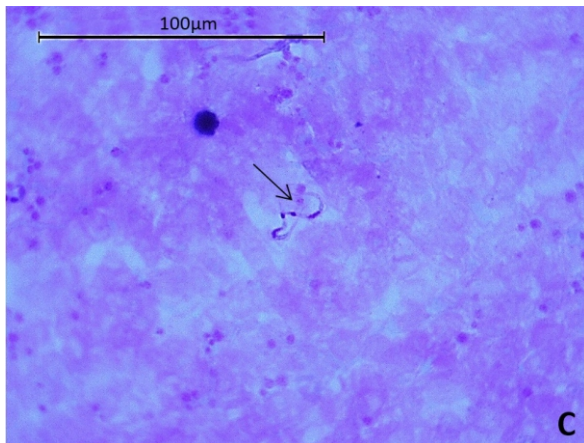


Figure C. *Trypanosoma cruzi* - thick blood Smear Giemsa-staining. Note the typical C-shape of the trypomastigote

Conflictos de interés: Los autores niegan conflictos de interés.

Financiamiento: Autofinanciado.

REFERENCIAS BIBLIOGRÁFICAS

1. Gascón J, Albajar P, Cañas E, et al. Diagnosis, Management, and Treatment of Chronic Chagas'

- Heart Disease in Areas Where *Trypanosoma cruzi* Infection Is Not Endemic. *Rev Española Cardiol (English Ed)*. 2007;60(3):285-293.
2. Zingales B, Souto RP, Mangia RH, et al. Molecular epidemiology of American trypanosomiasis in Brazil based on dimorphisms of rRNA and mini-exon gene sequences. *Int J Parasitol*. 1998;28(1):105-112.
3. Brener Z. Biology of *Trypanosoma Cruzi*. *Annu Rev Microbiol*. 1973;27(1):347-382.
4. Tyler KM, Engman DM. The life cycle of *Trypanosoma cruzi* revisited. *Int J Parasitol*. 2001;31(5-6):472-481.
5. Solis Acosta HM, Ferreira CS, Carvalho ME De. Human infection with *Trypanosoma cruzi* in Nasca, Peru: A seroepidemiological survey (1). *Rev Inst Med Trop Sao Paulo*. 1997;39(2):107-112.
6. Guilbert JJ. The world health report 2002 - reducing risks, promoting healthy life. *Educ Health (Abingdon)*. 2003;16(2):230.

Correspondencia

Heber Silva Díaz

Correo: hsilva@hrlamb.gob.pe

Revisión de pares

Recibido: 26/02/2019

Aceptado: 10/03/2019